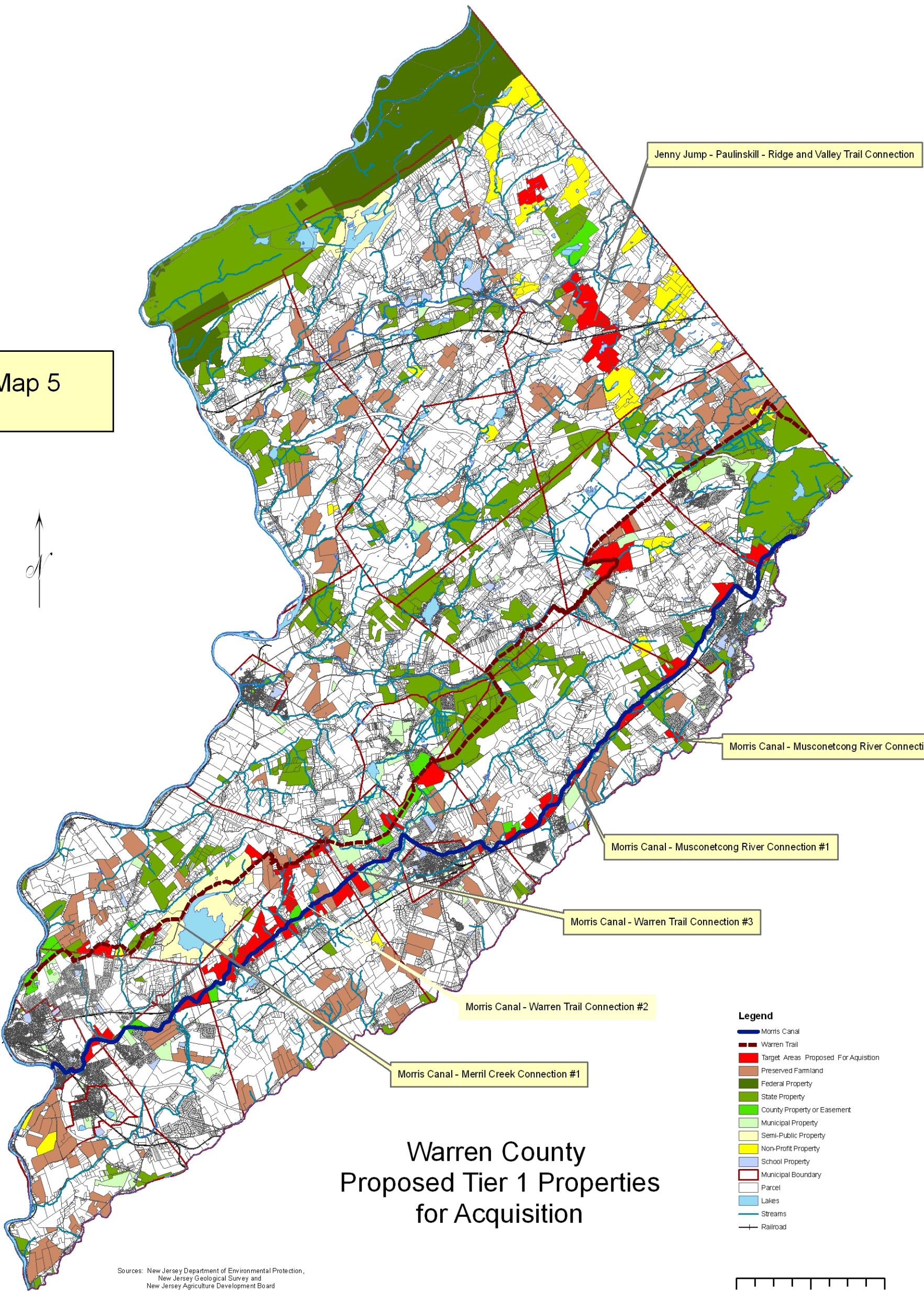


Map 5



- Legend**
- Morris Canal
 - Warren Trail
 - Target Areas Proposed For Aquisition
 - Preserved Farmland
 - Federal Property
 - State Property
 - County Property or Easement
 - Municipal Property
 - Semi-Public Property
 - Non-Profit Property
 - School Property
 - Municipal Boundary
 - Parcel
 - Lakes
 - Streams
 - Railroad

Warren County Proposed Tier 1 Properties for Acquisition

Sources: New Jersey Department of Environmental Protection,
New Jersey Geological Survey and
New Jersey Agriculture Development Board
Produced by: Warren County Planning Department 1999
Updated June 2007, January 2008, & March 7, 2008

