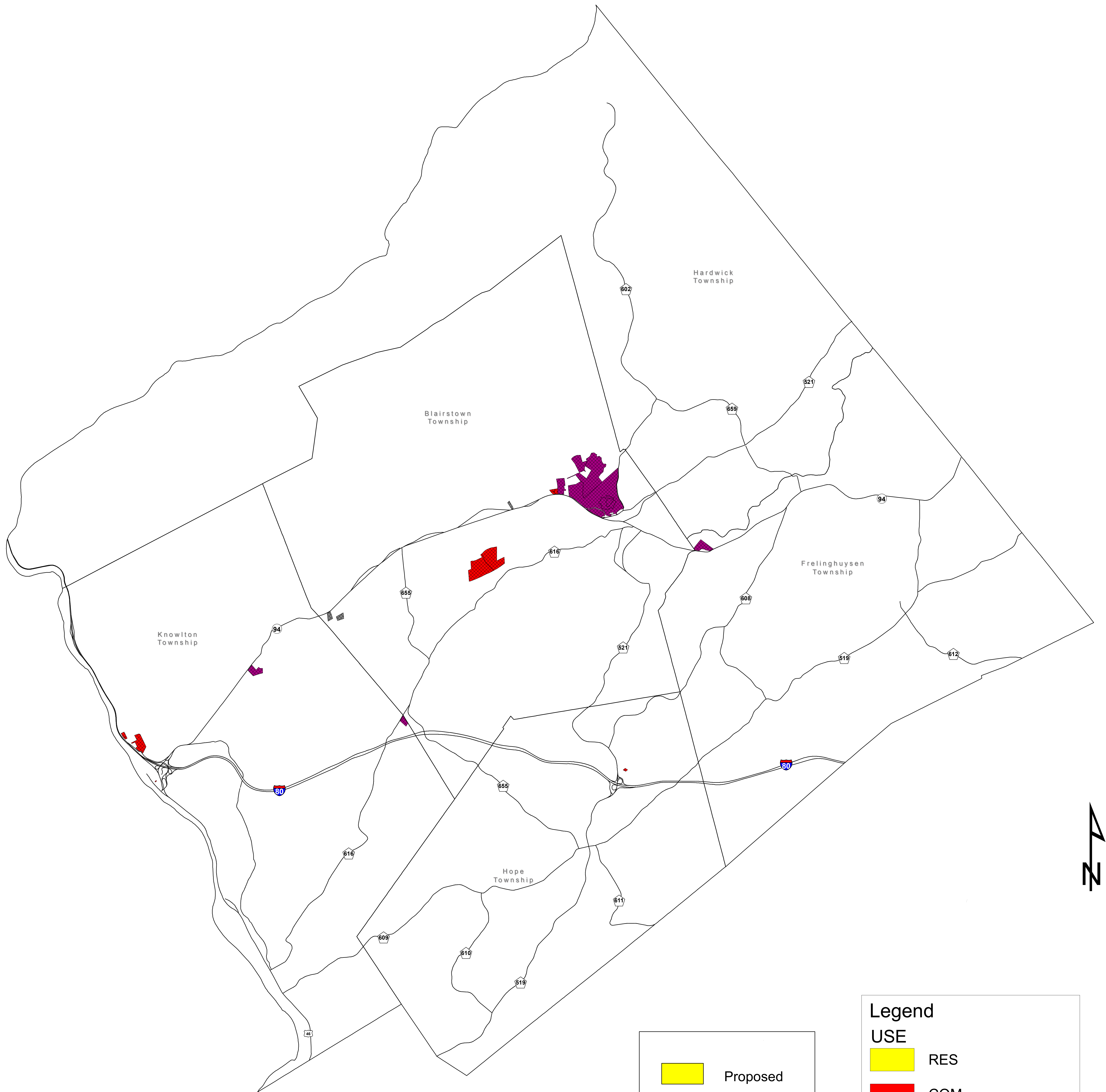


Development* in Warren County Northern Region 2009 - 2016**



Map 3C

	Proposed
	Under Review
	Preliminary
	Final (6/30/03)

Legend	
USE	
	RES
	COM
	IND
	MIXED
	OTHER

* Site Plans greater than 5,000 sq ft and Subdivisions 5 or more lots
 ** Warren County Development Review Applications as of 02/27/2017 meeting

