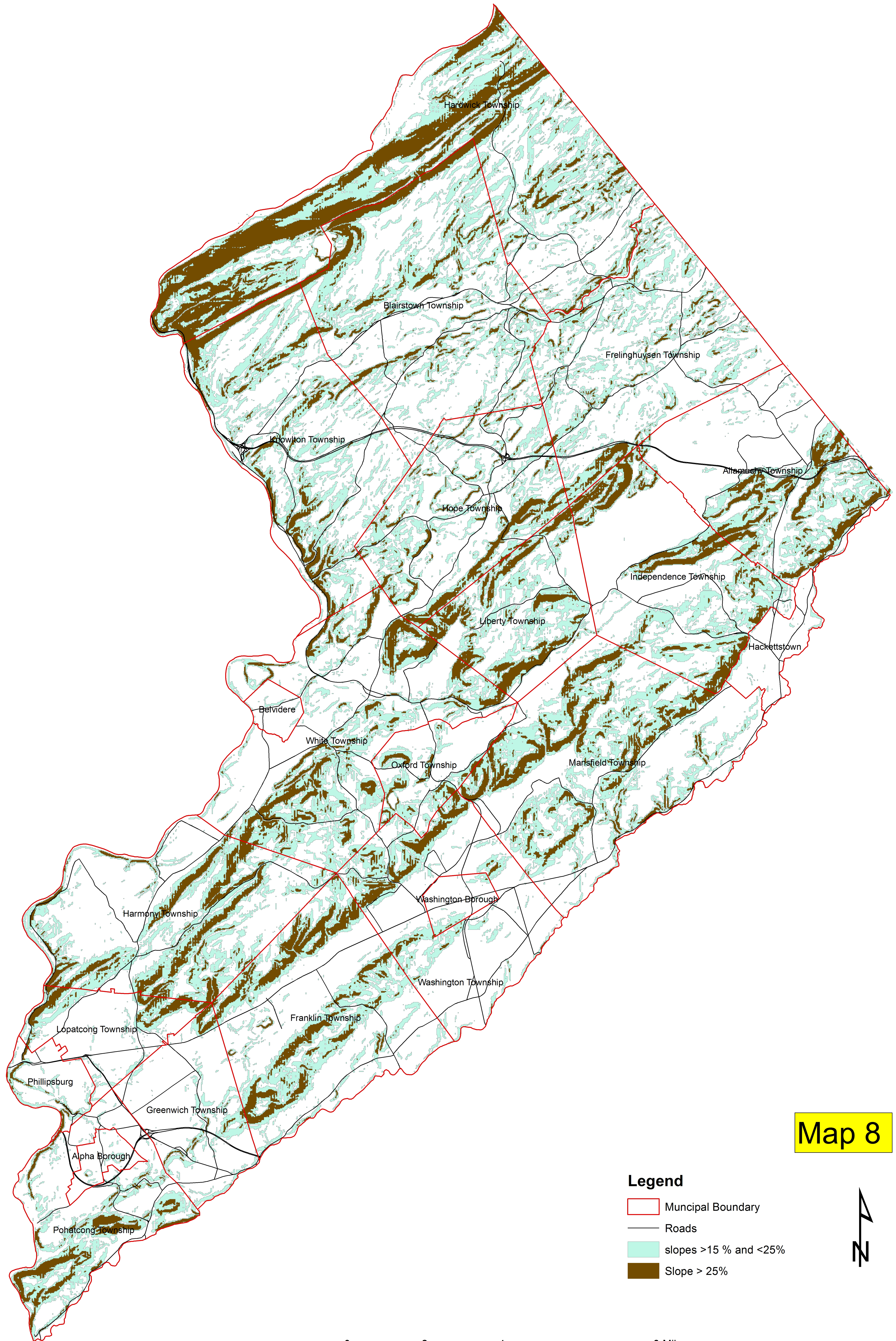
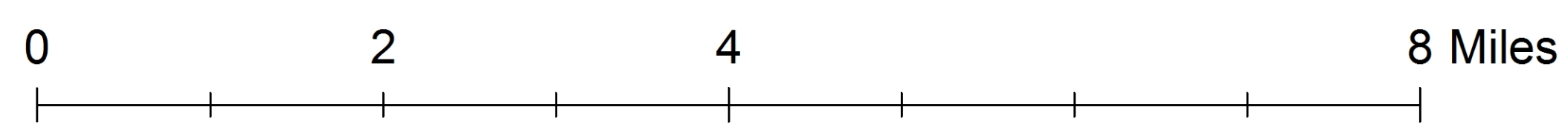
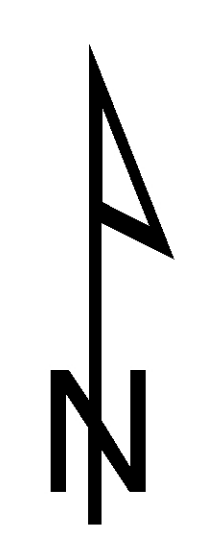


# STEEP SLOPES



Map 8

- Legend**
- Municipal Boundary
  - Roads
  - slopes >15 % and <25%
  - Slope > 25%



Sources: New Jersey Department of Environmental Protection 1997  
and United States Geological Survey various dates  
Prepared By: Warren County Planning Department 1999 Update  
February 2017