

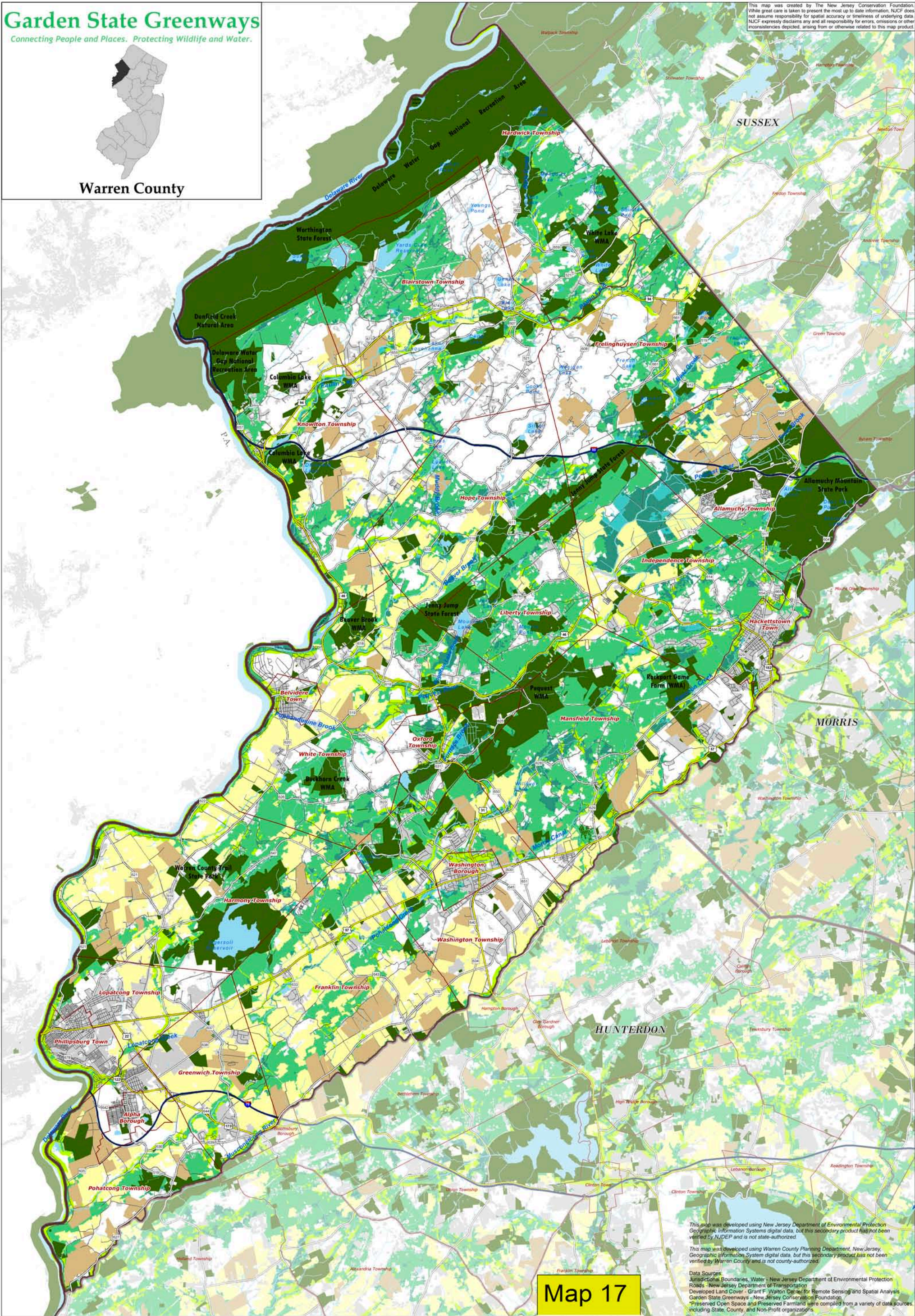
# Garden State Greenways

Connecting People and Places. Protecting Wildlife and Water.



Warren County

This map was created by The New Jersey Conservation Foundation. While great care is taken to present the most up to date information, NJCF does not assume responsibility for spatial accuracy or timeliness of underlying data. NJCF expressly disclaims any and all responsibility for errors, omissions or other inconsistencies depicted, arising from or otherwise related to this map product.



Map 17

This map was developed using New Jersey Department of Environmental Protection Geographic Information Systems digital data, but this secondary product has not been verified by NJDEP and is not state-authorized.

This map was developed using Warren County Planning Department, New Jersey Geographic Information System digital data, but this secondary product has not been verified by Warren County and is not county-authorized.

Data Sources:  
 Jurisdictional Boundaries, Water - New Jersey Department of Environmental Protection  
 Roads - New Jersey Department of Transportation  
 Developed Land Cover - Grant F. Walton Center for Remote Sensing and Spatial Analysis  
 Garden State Greenways - New Jersey Conservation Foundation  
 \*Preserved Open Space and Preserved Farmland were compiled from a variety of data sources, including State, County, and Non-Profit organizations.

**Garden State Greenways**

	Agriculture/Grassland
	Emergent Wetland
	Forested Wetland
	Upland Forest
	Beach/Dune
	Connectors

**Other Land Cover**

	Preserved Open Space
	Preserved Farmland
	Water
	Developed 2001
	County Boundary
	Municipal Boundary

**Other Land Cover**

	Interstate/Toll Highway
	U.S./State Highway
	County Road
	Local Road

0 0.75 1.5 2.25 3 Miles  
1:55,000

Garden State Greenways (GSG) is a vision for an interconnected, statewide system of open space. GSG county maps depict the results of the New Jersey Green Infrastructure Assessment (NJGIA) conducted by the New Jersey Conservation Foundation in cooperation with the New Jersey Department of Environmental Protection Green Acres Program and the Grant F. Walton Center for Remote Sensing and Spatial Analysis at Rutgers University.

The NJGIA identified large tracts of undeveloped land that could function as 'hubs' of an interconnected open space system in New Jersey. Linear 'connectors' were also identified by the NJGIA in order to represent potential linkages among identified hubs.

Garden State Greenways refers to the 'green infrastructure' identified by the NJGIA and represents a vision of interconnected open space that can help to lessen the environmental and social impacts of sprawl and maintain quality of life in New Jersey.

Green infrastructure plays a vital role in maintaining public health and quality of life in New Jersey by providing close-to-home recreation opportunities, safeguarding surface and underground water supplies and productive soils, protecting native plant and animal populations, and upholding scenic, cultural and historic amenities contributing to community character and livability throughout the state.

- Garden State Greenways sets forth eight county goals towards achieving the vision of a 'green infrastructure':
1. Establish parks, trails, or other protected lands within walking distance of every New Jersey resident.
  2. Permanently protect New Jersey's critical natural resource lands: those contributing to groundwater or aquifer recharge, surface water quality, rare and endangered species habitat, and prime soils.
  3. Permanently protect large, contiguous tracts of natural land for the long-term survival of native plant and animal species.
  4. Permanently protect large, contiguous tracts of farmland for the long-term viability of agriculture and the maintenance of scenic and cultural landscapes.
  5. Permanently protect parks, natural lands, and farmland surrounding historic sites, in order to maintain their historic character, visual context and interpretive value.
  6. Link together New Jersey's protected natural, agricultural, historic, and recreation lands via trails and greenway connectors.
  7. Grant public access and trail rights-of-way, where appropriate, across green infrastructure lands to allow the public to benefit from the scenic, recreational and interpretive opportunities provided therein.
  8. Coordinate state, local, and private preservation as well as land use planning efforts, around common maps and shared GIS data, towards achieving goals one through seven.

