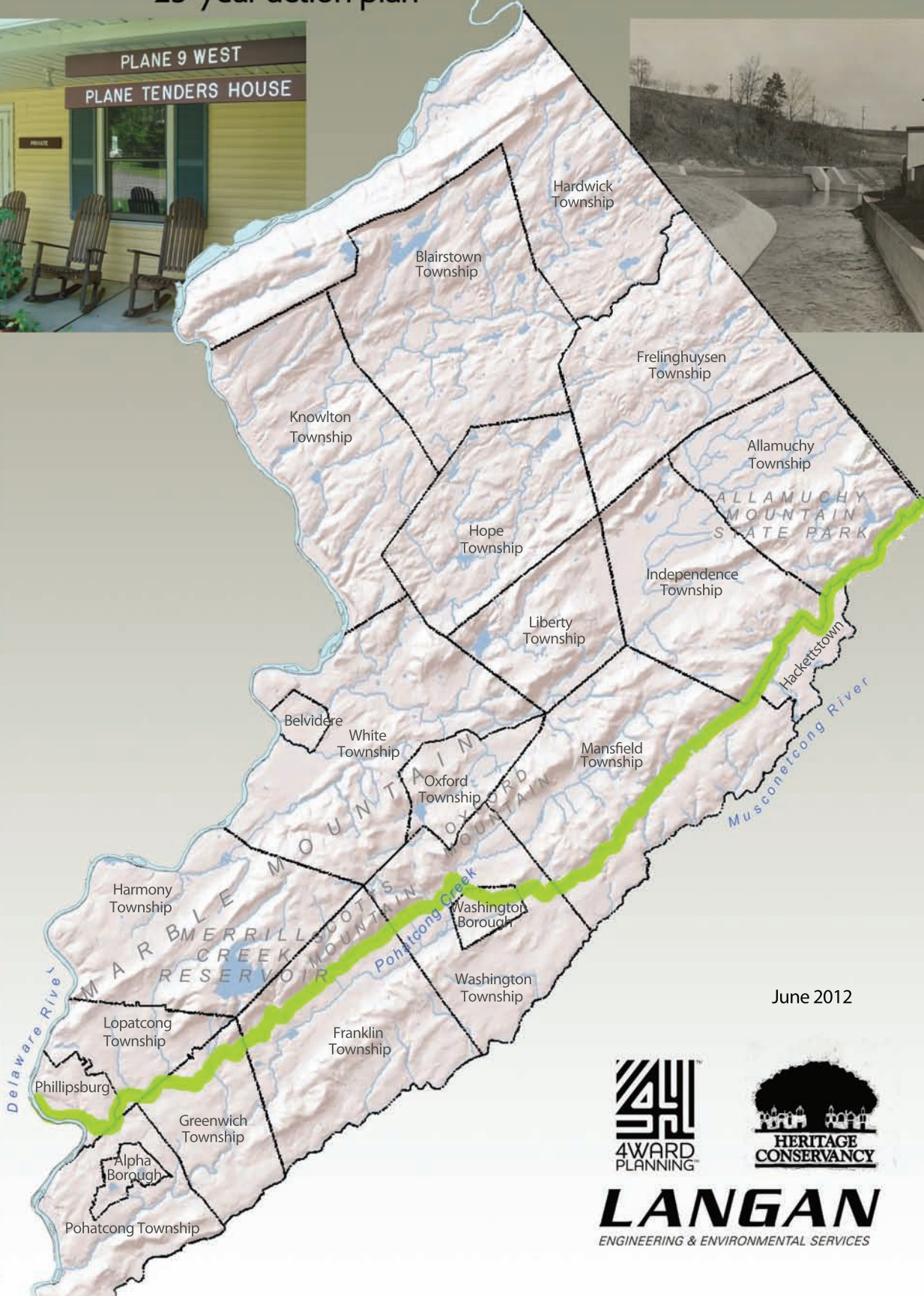
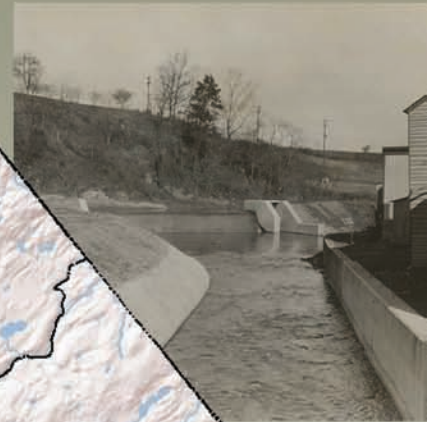


Morris Canal greenway

25-year action plan



June 2012



LANGAN
ENGINEERING & ENVIRONMENTAL SERVICES

The preparation of this report has been financed in part by the U.S. Department of Transportation, North Jersey Transportation Planning Authority, Inc., Federal Transit Administration and the Federal Highway Administration. This document is disseminated under the sponsorship of the U.S. Department of Transportation in the interest of information exchange. The United States Government assumes no liability for its contents or its use thereof.

Acknowledgements

Technical Advisory Committee

Dennis Bertland
Brett Bragin
Don Brinker
David Detrick
John Handlos
Mike Helbing
James Lee, Jr.
James Lee, III
Robert Smith, P.E.
Myra Snook

Warren County Board of Chosen Freeholders

Everett A. Chamberlain, *Director*
Richard D. Gardner, *Deputy Director*
Jason L. Sarnoski

Project Team

Warren County Planning Department

David Dech, *Planning Director*
Richard Miller, *Principal Planner*
Albert Krouse, *Senior Planner*
Brian Appezzato, *Senior Planner*
Elizabeth Roy, *Principal Planning Aide*

Warren County Department of Land Preservation

Corey Tierney, *Director of Land Preservation*

Langan Engineering

Michael Szura, LLA, ASLA, *Director of Landscape
Architecture + Planning*
Nate Burns, RLA, ASLA, LEED-AP BD+C,
Project Manager
Dan Badgely, LLA, ASLA, PP, *Landscape
Architect*
Rachael Griffith, *Staff Landscape Architect*

Heritage Conservancy

Jeffrey Marshall, *President*
Karen Williamson, RLA, CPSI, *Landscape
Architect*

4Ward Planning

Todd Poole, *Managing Principal*

North Jersey Transportation Planning Authority

Scott Rowe, *Manager Corridor Studies and
Project Planning*
Megan Kelly, *Principal Planner Regional and
Subregional Studies*

Many thanks to all those who attended and participated in focus group sessions, stakeholder meetings and public open houses. Your comments and concerns played a vital part in the planning process and will contribute to the success of the Morris Canal Greenway.

Table of Contents

Morris Canal Greenway 25-Year Action Plan

Executive Summary	<i>i</i>
Introduction	<i>1</i>
<i>Purpose of this Plan</i>	<i>2</i>
<i>A Brief History</i>	<i>6</i>
<i>Why Tell the Morris Canal Story?</i>	<i>8</i>
<i>Current State of the Canal and its Resources</i>	<i>11</i>
<i>Project Approach and Methodology</i>	<i>12</i>
Existing Features	
<i>Study Area</i>	<i>17</i>
<i>Land Use</i>	<i>18</i>
<i>General Greenway Description</i>	<i>19</i>
<i>Transportation and Linkage Assessment</i>	<i>26</i>
<i>Land Development Plans and Regulations</i>	<i>28</i>
<i>Existing Organizational Structure</i>	<i>32</i>
<i>Demographic Analysis</i>	<i>38</i>
<i>Local and Regional Trails and Businesses</i>	<i>44</i>
<i>Economic Benefits</i>	<i>51</i>
<i>Natural Resources</i>	<i>55</i>
<i>Field View and Greenway Segments</i>	<i>58</i>
<i>Historic Assessment and Evaluation</i>	<i>60</i>
Visioning and Public Process	
<i>A Vision for the 25-Year Action Plan</i>	<i>81</i>
Development of Economic and Public Benefits	
<i>Public and Economic Benefits of the Morris Canal Greenway</i>	<i>91</i>
<i>Prospective Opportunities</i>	<i>99</i>

Table of Contents

Recommendations

<i>Introduction</i>	104
<i>Overall Greenway Trail Considerations</i>	106
<i>Greenway Segments Recommendations</i>	
<i>Segment 1: Morris Canal Arch to Lock Street</i>	114
<i>Segment 2: Lock Street to Route 22</i>	132
<i>Segment 3: Route 22 to Plane 9W</i>	146
<i>Segment 4: Plane 9W to Bread Lock Park</i>	164
<i>Segment 5: Bread Lock Park to Meadow Breeze Park</i>	178
<i>Segment 6: Meadow Breeze Park to Washington Borough</i>	188
<i>Segment 7: Washington Borough to Port Colden</i>	298
<i>Segment 8: Port Colden to Port Murray</i>	212
<i>Segment 9: Port Murray to Rockport Pheasant Farm</i>	226
<i>Segment 10: Rockport Pheasant Farm to Florence Kuipers Park</i>	236
<i>Segment 11: Florence Kuipers Park to Saxton Falls</i>	250
<i>Segment 12: Saxton Falls to Waterloo Village</i>	262
<i>Greenway-Wide Recommendations</i>	
<i>Resource Preservation Recommendations</i>	270
<i>School Education Recommendations</i>	280
<i>Public Education Recommendations</i>	287
<i>Economic Development and Funding Recommendations</i>	312
<i>Operations Recommendations</i>	341
<i>Land Use and Policy Recommendations</i>	360
<i>Public Participation Recommendations</i>	370
<i>Organizational Structure Alternatives and Recommendations</i>	383

Study and Recommendations Maps

<i>Study Area</i>	
<i>Land Cover South</i>	
<i>Land Cover North</i>	
<i>Land Use Capability South</i>	
<i>Land Use Capability North</i>	
<i>Zoning South</i>	
<i>Zoning North</i>	

Table of Contents

Historic Resources South
Historic Resources North
Natural Resources South
Natural Resources North
Greenway Segments Map
Physical Canal Conditions
Recommendations Maps

Appendices

Appendix A *Review of Existing Planning Documentation*
Appendix B *NJ DEP- Historic Preservation Office of New Jersey and
National Registers of Historic Places*
Appendix C *Meeting Minutes and List of Attendees*
Appendix D *Volunteer Group Promotional Material and Information
Examples*
Appendix E *Recommendations from the Master Plans for Lock 7 West and
Plane 9 West*
Appendix F *Complete List of Opportunities and Constraints*
Appendix G *Model Ordinance*
Appendix H *Morris Canal Survey Index*
Appendix I *Land Owners Survey Results*
Appendix J *Rails to Trails and Liability*
Appendix K *Master List of Action Plan Recommendations*
Appendix L *Additional Canal-Related Sources*