

Appendix D:

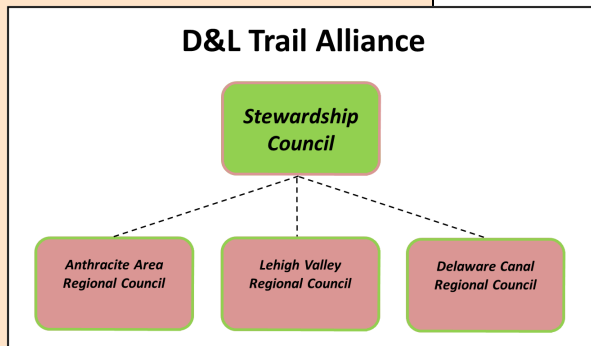
# Volunteer Group Promotional Material and Information Examples

Morris Canal Greenway 25-Year Action Plan

# Delaware and Lehigh National Heritage Corridor

## D&L Trail Alliance

**The D&L Trail Alliance coordinates stewardship of the 165-mile D&L Trail and its side trails.**



The Alliance is composed of an advisory council and three regional councils.



Thousands of bikers, walkers, and adjacent landowners volunteer their time to maintain and enhance the trail.

The **D&L Trail Alliance** will include a council of land managers who own portions of the 165-mile D&L Trail and three regional councils that include partners, volunteers, and concerned citizens in the northern, central and southern sections of the Corridor.

### REGIONAL COLLABORATION

With the support of the **William Penn Foundation**, the D&L Trail Alliance brings together municipal, state, and non-profit landowners to coordinate the stewardship and promotion of the D&L Trail. Participating landowners agree to stewardship guidelines for the maintenance of the trail, which ensures that best management practices and sustainable trail development are consistently implemented along the entire trail. The regional councils provide technical assistance to the Alliance and attend to local trail issues, maintenance, and programming.

A major goal of our regional approach is to promote awareness of the long-distance connectivity that the D&L Trail provides and the many economic, health and recreational benefits for the public. On its southern end, the D&L Trail connects the Highlands Trail and the expanding Philadelphia Regional Trail Network. On the northern end, the D&L intersects the Appalachian Trail and the Susquehanna Greenway.

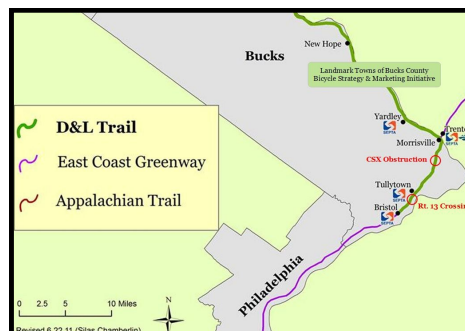
### STEWARDSHIP OF THE D&L TRAIL NETWORK

The Alliance's long-term vision is the sustainable stewardship of the D&L Trail and the dozens of intersecting trails that form the eastern Pennsylvania D&L Trail Network. The collective expertise of the D&L and its partners can ensure that the network becomes an asset to residents and a destination for visitors.



### For more information, contact:

Silas Chamberlin, Alliance Coordinator  
2750 Hugh Moore Park Rd.  
Easton, PA 18042  
610-923-3548 (x222)  
silas@delawareandlehigh.org  
delawareandlehigh.org



The Alliance will promote the D&L Trail's connections with the Philadelphia Regional Trail Network and other trails throughout eastern Pennsylvania.



The Alliance continues the D&L's long history of productive collaboration with federal, state and local partners.

# *Regional Council Boundaries*

Wilkes-Barre

## ***Anthracite Regional Council***

**Regional Lead: Dale Freudenberger**

610-377-4063

dale@delawareandlehigh.org

Slatington

## ***Lehigh Valley Regional Council***

**Regional Lead: Sherry Acevedo**

610-923-3548 (x226)

sherry@delawareandlehigh.org

Easton

Allentown

## ***Delaware Canal Regional Council***

**Regional Lead: Donna Boone**

215-781-2605

donna@delawareandlehigh.org

***D&L Trail Alliance Coordinator***

**Silas Chamberlin**

610-923-3548 (x222)

silas@delawareandlehigh.org

Bristol

# Join the D&L Trail Tenders

Become part of the volunteer corps of the D&L Trail



## Sign Up Today!

Help enhance and maintain the D&L Trail in your area

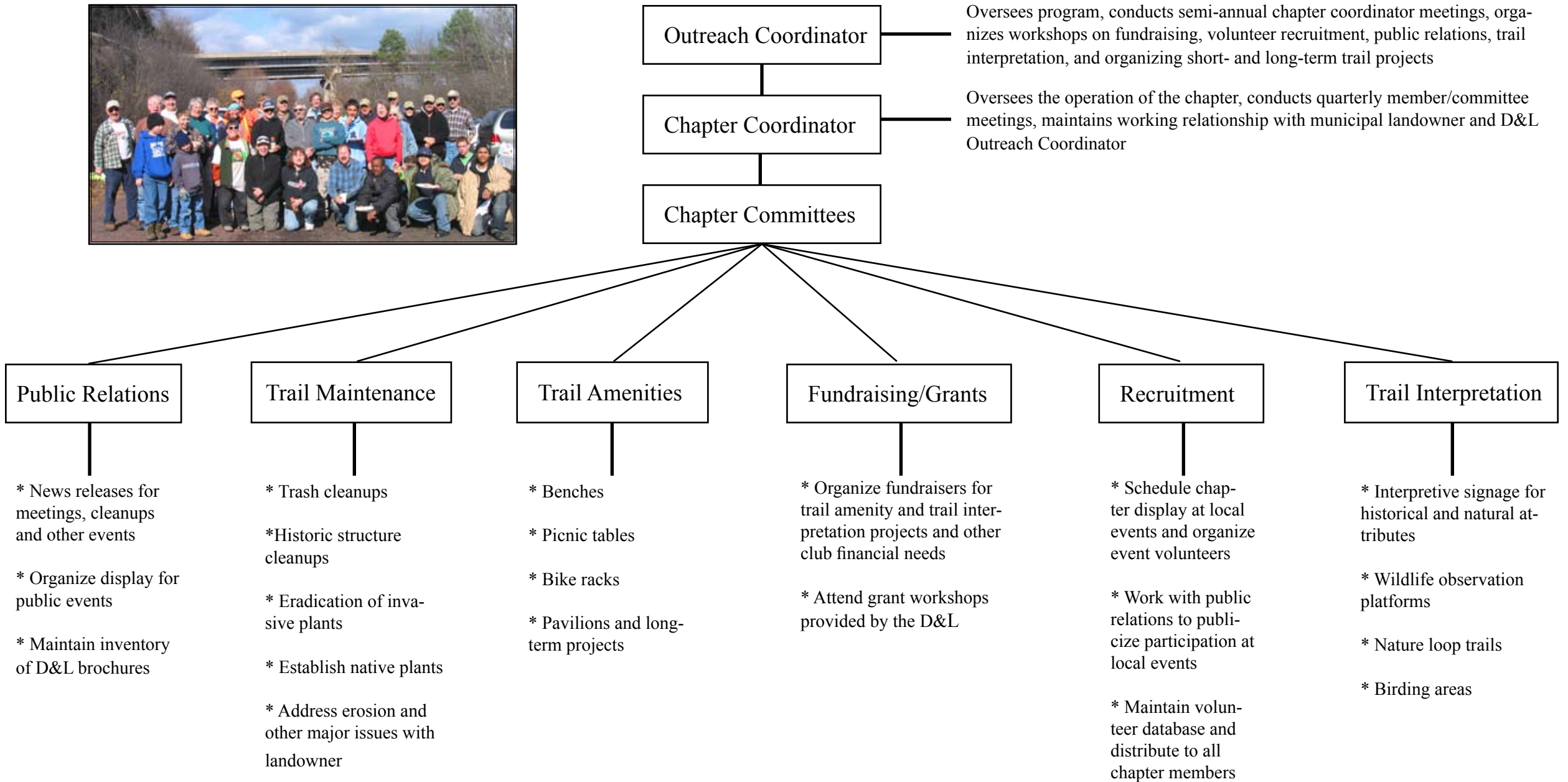
Name \_\_\_\_\_ Telephone \_\_\_\_\_

Street address \_\_\_\_\_

City \_\_\_\_\_ State \_\_\_\_\_ Zip code \_\_\_\_\_

E-mail address \_\_\_\_\_

Turn in this form at today's cleanup or return it to: D&L, 2750 Hugh Moore Park Rd., Easton, PA 18042  
For more information, e-mail [info@delawareandlehigh.org](mailto:info@delawareandlehigh.org) or visit [www.delawareandlehigh.org](http://www.delawareandlehigh.org)



Delaware Canal State Park  
Friends of the Delaware Canal

## ***Canal Tender Guidelines***

Thank you so much for volunteering to improve the Delaware Canal!  
We hope that you'll find caring for your section of the Canal rewarding and fun.

### WHAT TO TAKE WITH YOU:

1. Heavy-duty trash bags
2. Work gloves

### ALSO USEFUL OR SOMETIMES NECESSARY:

1. Daypack for carrying supplies, water, snack, poncho, etc.
2. Additional tools such as pruning shears, rake, net for fishing objects out of the water, and such. Once you are familiar with your section, you'll have a much better idea of what is most useful for you.
3. First-aid kit, insect repellent, sunscreen, sunglasses, and wet-wipes.
4. Binoculars, pocket knife, hand lens, camera (don't forget to send your photos for the on-line *Flora and Fauna Atlas*).

### WHAT TO DO:

1. **COMPLETE A PA CONSERVATION VOLUNTEER FORM.** Becoming an official volunteer of the PA Department of Conservation and Natural Resources allows you to be covered by the State's liability policy, if you are involved in an accident. Please go online to [www.dcnr.state.pa.us/cons/cvapp.aspx](http://www.dcnr.state.pa.us/cons/cvapp.aspx) and submit your information there, or if you need a paper copy, just let us know.
2. **PICK UP LITTER AND DEBRIS.** If your area is too badly littered, remove the most obvious and offensive and provide FODC with a clear description of the location of extensive trash or large objects. Leave your bags of trash at pre-arranged Park pick-up spots or take them home with you.
3. **REMOVE ANY OBSTRUCTION FROM THE TOWPATH** that could endanger or trip cyclists, joggers, and unwary walkers. This includes things such as fallen branches, branches growing far out over the towpath, and vines, wire, or rope on or across the towpath.
4. **LOCATE INVASIVE SPECIES** and call FODC for advice as to how to handle.
5. **WATCH FOR AND REPORT ON SIGNIFICANT CHANGES OR ANYTHING UNUSUAL.** If you observe any of the following serious conditions, call in your report to the Delaware Canal State Park Office (610-982-5560).
  - a. A leak or break in the canal bank large enough to cause a whirlpool on the surface of the water.
  - b. Vandalism to a flood control gate
  - c. Towpath failure
  - d. A condition which can endanger a Park visitor

The procedures to follow for other changes are:

1. Call FODC to report the change or unusual condition if you feel that it is something that merits prompt attention.

OR

2. Include the change in your written report
6. MAKE NOTES AND REPORT ON FLORA AND FAUNA. You may want to take photos to and submit them for the Flora and Fauna Atlas at [www.fodc.org](http://www.fodc.org). The Atlas web page includes a list of online resources that may help if you need to identify what you've seen.
7. SUBMIT A COPY OF YOUR CANAL TENDER REPORT TO FODC AT LEAST TWICE A YEAR. If you would like to provide additional reports during the year, they would be very welcome. You can print additional copies of the Report form by going to [www.fodc.org](http://www.fodc.org) and clicking on Members/Volunteers – Canal Tenders.
8. GET TO KNOW YOUR SECTION. There are members of the Friends who know about the history, geology, and ecology of the Canal. Contact FODC to get in touch with these knowledgeable people and find out about other places where you can learn more about the waterway and its surroundings.

FRIENDS OF THE DELAWARE CANAL (FODC)  
CONTACT INFORMATION

Phone: 215-862-2021

E-mail: [friends@fodc.org](mailto:friends@fodc.org)

Address: 145 South Main Street, New Hope, PA 18938

Please feel free to contact us as often as you'd like.

Delaware Canal State Park  
Friends of the Delaware Canal

***Canal Tender Report***

FROM MILE \_\_\_\_\_ SITE DESCRIPTION \_\_\_\_\_

TO MILE \_\_\_\_\_ SITE DESCRIPTION \_\_\_\_\_

NAME/GROUP \_\_\_\_\_

PHONE # \_\_\_\_\_ E-MAIL \_\_\_\_\_

.....  
DATE \_\_\_\_\_ TIME SPENT \_\_\_\_\_ # OF WORKERS \_\_\_\_\_

AMOUNT OF TRASH COLLECTED \_\_\_\_\_

COMMENTS ABOUT TRASH \_\_\_\_\_

PARK USERS – Examples: 2 boaters in canoe, fisherman, Cub Scout troop hiking \_\_\_\_\_

CONDITIONS OF NOTE – Indicate approximate mileage or provide landmark info \_\_\_\_\_

FLORA/FAUNA of interest \_\_\_\_\_

ADDITIONAL COMMENTS \_\_\_\_\_

Please complete, and mail to Friends of the Delaware Canal, 145 South Main Street, New Hope, PA 18938.

Thanks!



# Join the D&L TRAIL PATROL

If you enjoy walking or riding on the D&L Trail, consider joining our patrol. Members patrol the trail regularly, assist fellow trail users and report trail conditions.



**To volunteer for the D&L Trail Patrol contact:**

**Silas Chamberlin, Trail Patrol Manager**  
**Silas@delawareandlehigh.org**  
**610-923-3548 (x222)**